



GAT MONTHLY MEMBERSHIP PROGRESS REPORT

Results as of: 9/30/2021

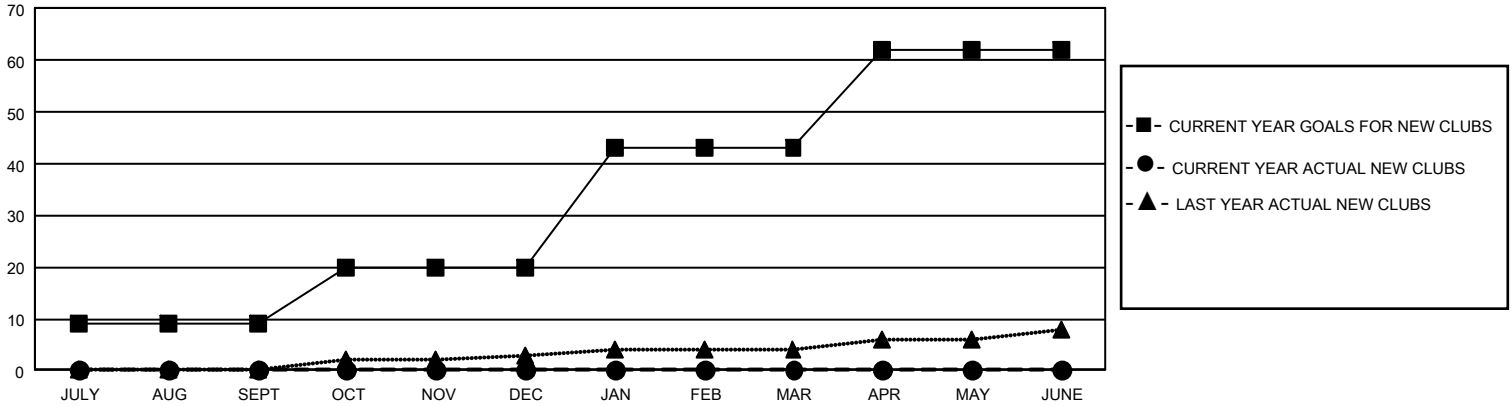
GAT Constitutional Area 5 - Japan

REPORT DOES NOT INCLUDE CLUBS IN UNDISTRICTED AREAS.

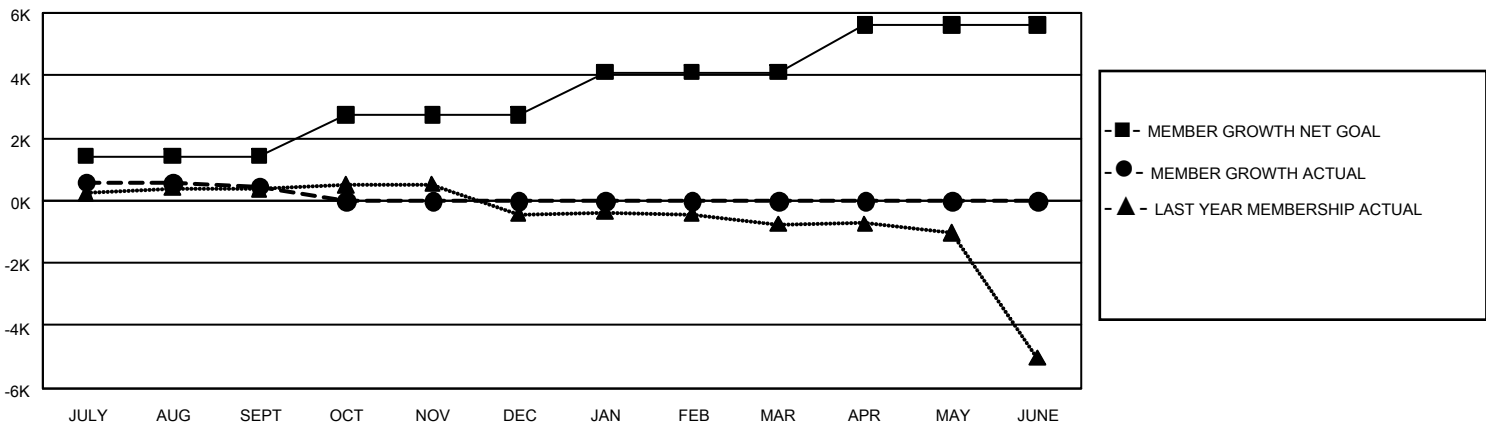
Clubs			
RESULTS FOR 2021-2022			
QUARTER	NEW CLUB GOAL	NEW CLUBS	DROPPED CLUBS
JULY/AUG/SEPT	27	0	5
OCT/NOV/DEC	33	0	0
JAN/FEB/MAR	69	0	0
APR/MAY/JUNE	57	0	0

Members			
RESULTS FOR 2021-2022			
QUARTER	MEMBER GROWTH NET GOAL	MEMBER GROWTH ACTUAL	DROPPED MEMBERS ACTUAL (including transfers)
JULY/AUG/SEPT	1424	1,942	1,350
OCT/NOV/DEC	1305	0	0
JAN/FEB/MAR	1381	0	0
APR/MAY/JUNE	1520	0	0

GOALS AND ACTUAL NEW CLUBS CUMULATIVE



GOALS AND ACTUAL MEMBERS CUMULATIVE



DROPPED CLUBS: 5	962 CLUBS OF 2,850 ADDED 1 OR MORE NEW MEMBERS CLICK HERE FOR CUMULATIVE MEMBERSHIP DATA	GENDER DISTRIBUTION	
		MALE 78,022 (76.58%) FEMALE 23,864 (23.42%) NON BINARY 0 (0.00%) PREFER NOT TO ANSWER 0 (0.00%)	
DROPPED MEMBERS		TOTAL FAMILY UNIT MEMBERS	35,614
DECEASED 172 CLUB CANCELLED 2 OTHER 1,179 TOTAL 1,353		FAMILY MEMBERS PAYING HALF DUES	19,620